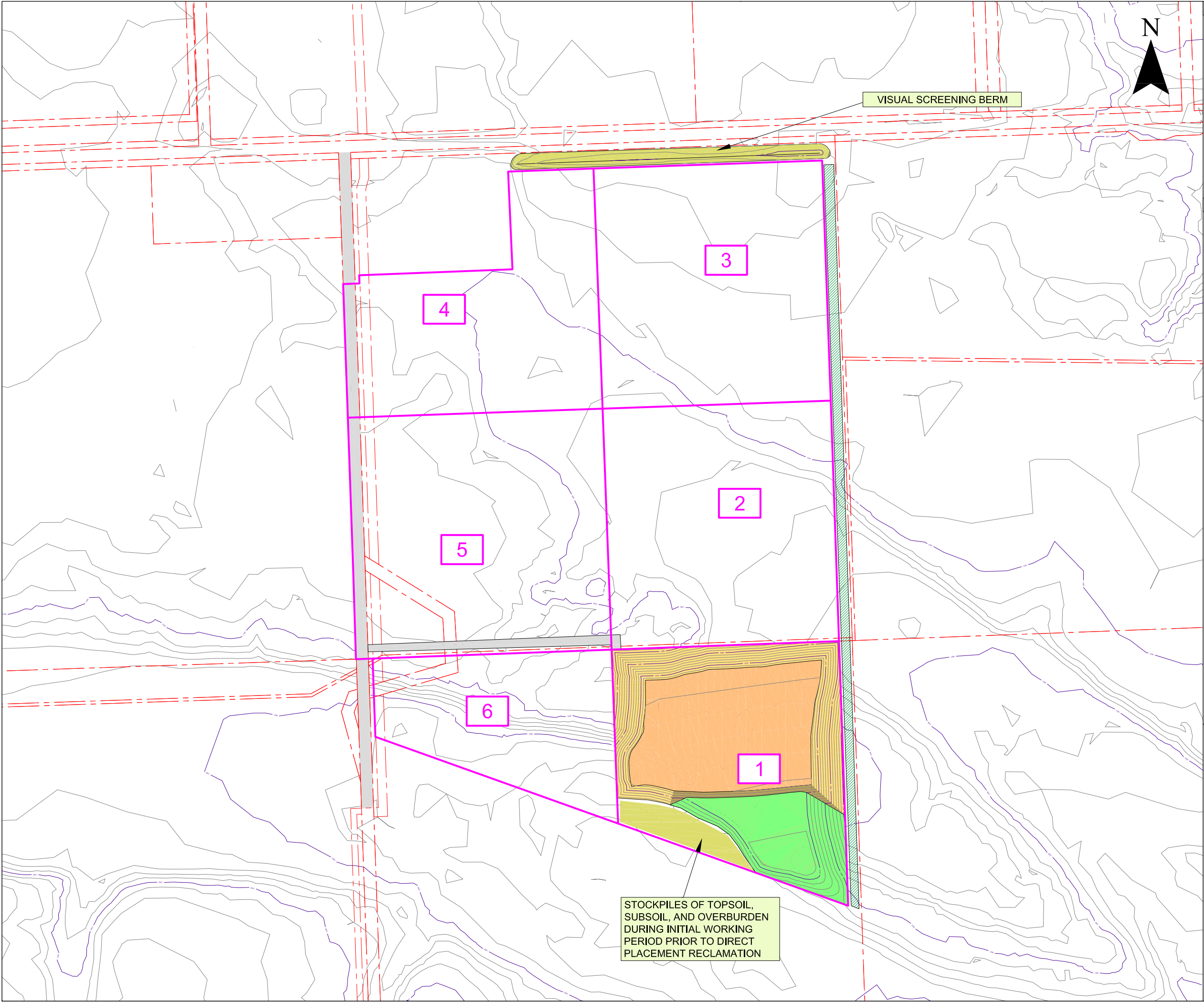


EM01\_PHASE 1\_v2.dwg



**NOTES**

THIS PLAN SHOWS THE GENERAL ORDER OF WORKING, WITH MINING BLOCKS PROGRESSING IN AN ANTICLOCKWISE DIRECTION FROM THE SOUTH EAST.

EACH MINING BLOCK WILL BE NO GREATER THAN 150m X 150m (22,500m³).

**LEGEND**

	EXTRACTION PHASE BOUNDARY
	LEGAL BOUNDARIES
	OVERBURDEN / SOIL STORAGE
	ACCESS ROAD
	ACTIVE MINING AREA
	PREVIOUS MINING AREA
	RECLAIMED AREA

MOUNTAIN ASH LIMITED PARTNERSHIP.  
SUMMIT AGGREGATES RESOURCE  
W 1/2 SEC 31 TWP 026 RGE 03 W5M  
COCHRANE  
ALBERTA

SLR  
global environmental solutions

SLR Consulting (Canada) Ltd.  
200 - 708 11th Ave SW  
Calgary,  
Alberta, T2R 0ER  
www.slrconsulting.com

**COP APPLICATION**

212.06650.00006

**OVERALL WORKING PROGRESSION**

**01**

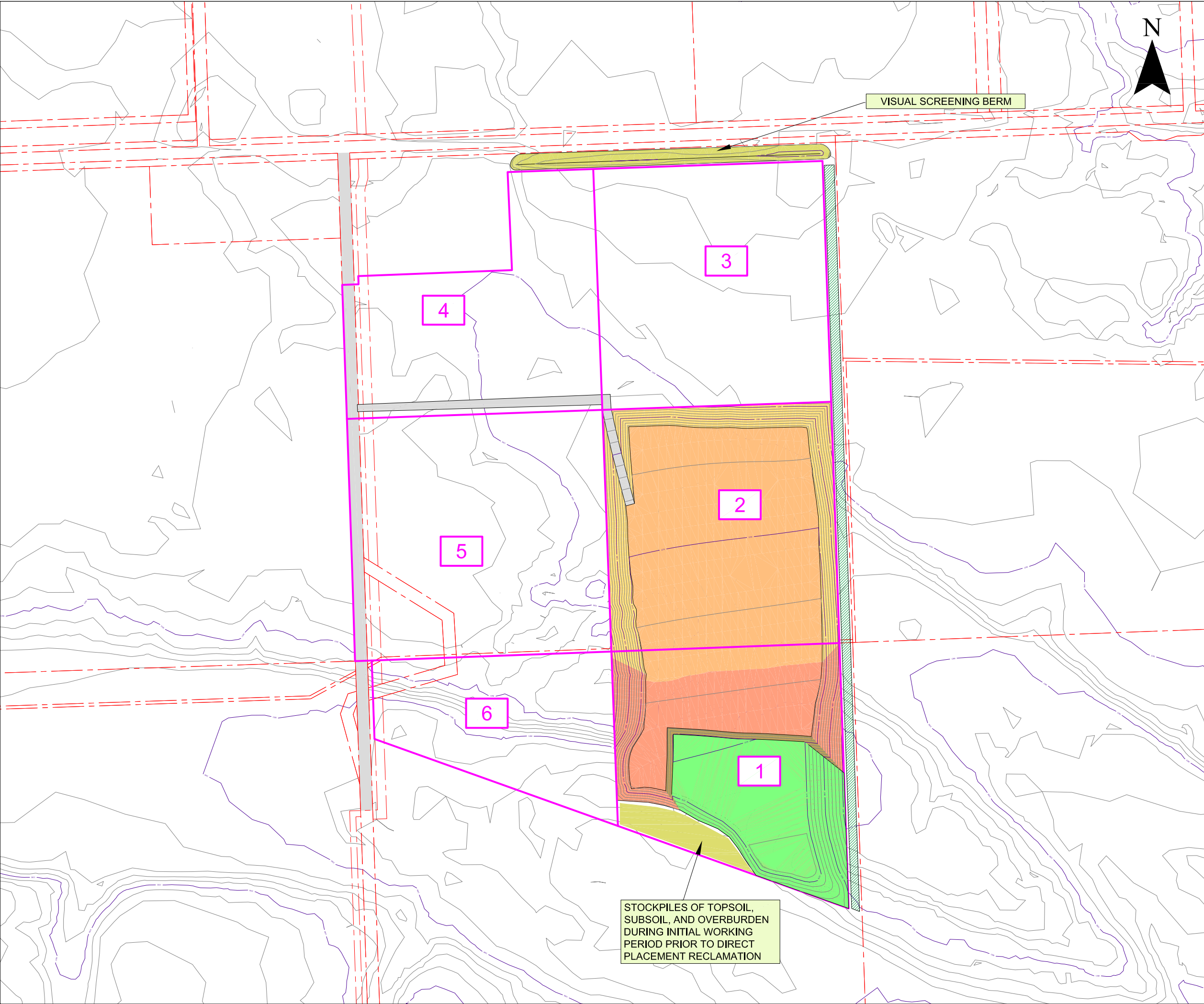
Scale

1:6,000 @ A3

Date

JULY 2021

EM02\_PHASE 2\_v2.dwg



**NOTES**


THIS PLAN SHOWS THE GENERAL ORDER OF WORKING, WITH MINING BLOCKS PROGRESSING IN AN ANTICLOCKWISE DIRECTION FROM THE SOUTH EAST.

EACH MINING BLOCK WILL BE NO GREATER THAN 150m X 150m (22,500m³).

**LEGEND**

- EXTRACTION PHASE BOUNDARY
- LEGAL BOUNDARIES
- OVERBURDEN / SOIL STORAGE
- ACCESS ROAD
- ACTIVE MINING AREA
- PREVIOUS MINING AREA
- RECLAIMED AREA

MOUNTAIN ASH LIMITED PARTNERSHIP.  
SUMMIT AGGREGATES RESOURCE  
W 1/2 SEC 31 TWP 026 RGE 03 W5M  
COCHRANE  
ALBERTA



SLR  
global environmental solutions

SLR Consulting (Canada) Ltd.  
200 - 708 11th Ave SW  
Calgary,  
Alberta, T2R 0ER  
www.slrconsulting.com

**COP APPLICATION**

212.06650.00006

**OVERALL WORKING PROGRESSION**

**02**

Scale

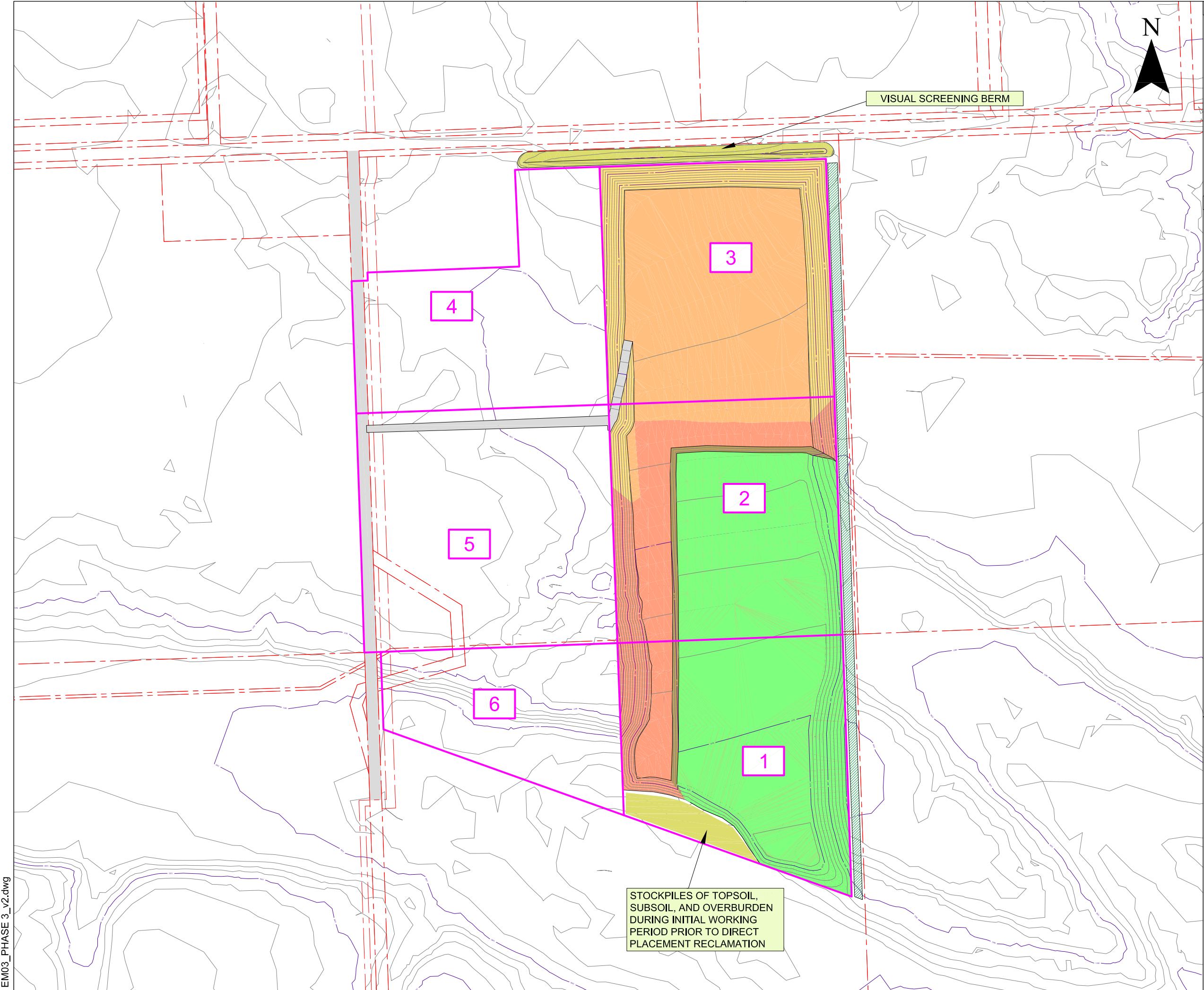
1:6,000 @ A3

Date

JULY 2021



EM03\_PHASE 3\_v2.dwg



**NOTES**

THIS PLAN SHOWS THE GENERAL ORDER OF WORKING, WITH MINING BLOCKS PROGRESSING IN AN ANTICLOCKWISE DIRECTION FROM THE SOUTH EAST.

EACH MINING BLOCK WILL BE NO GREATER THAN 150m X 150m (22,500m³).

**LEGEND**

- EXTRACTION PHASE BOUNDARY
- LEGAL BOUNDARIES
- OVERBURDEN / SOIL STORAGE
- ACCESS ROAD
- ACTIVE MINING AREA
- PREVIOUS MINING AREA
- RECLAIMED AREA

MOUNTAIN ASH LIMITED PARTNERSHIP.  
SUMMIT AGGREGATES RESOURCE  
W 1/2 SEC 31 TWP 026 RGE 03 W5M  
COCHRANE  
ALBERTA

**SLR**  
global environmental solutions

SLR Consulting (Canada) Ltd.  
200 - 708 11th Ave SW  
Calgary,  
Alberta, T2R 0ER  
www.slrconsulting.com

**COP APPLICATION**

212.06650.00006

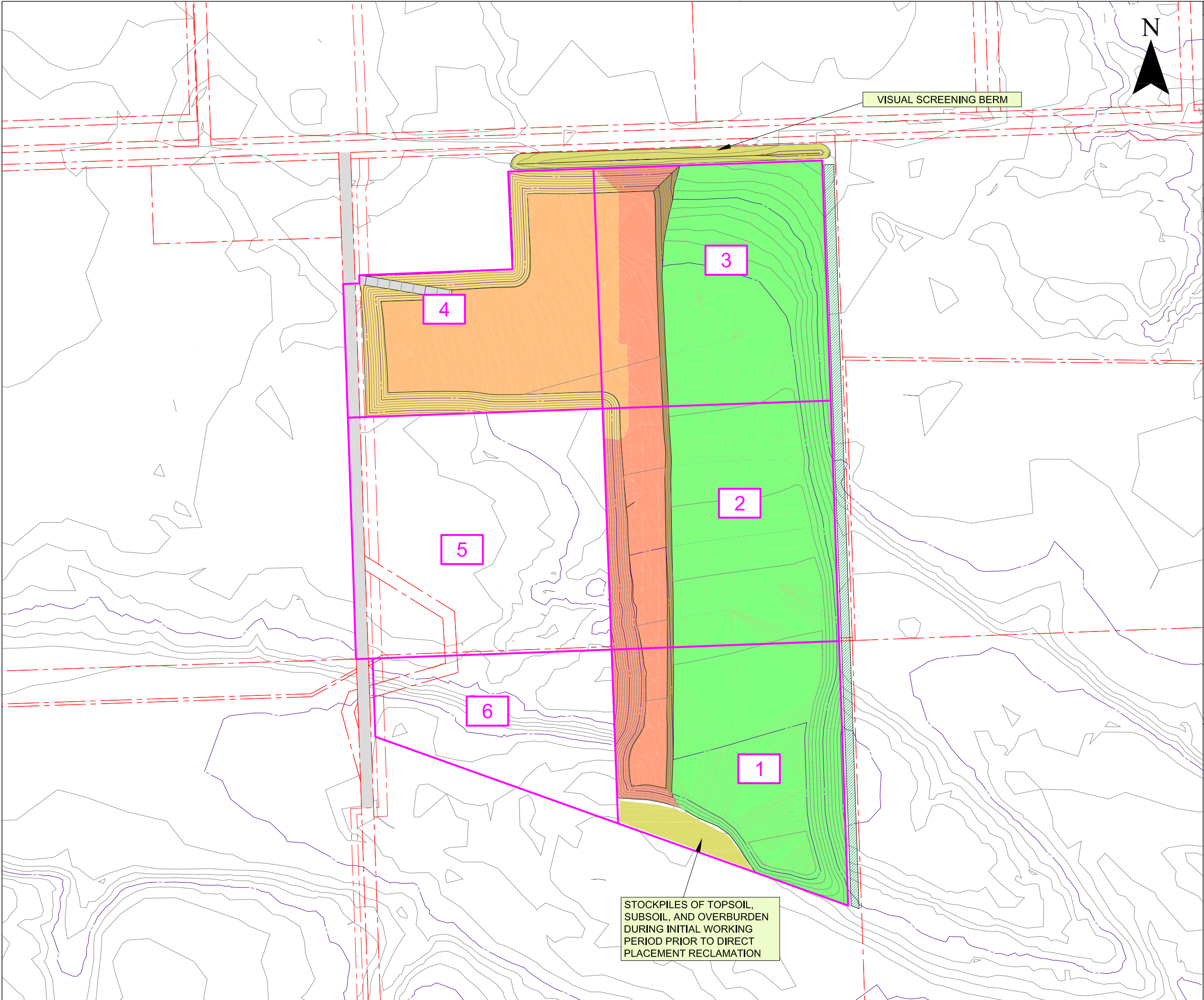
**OVERALL WORKING PROGRESSION**

**03**

Scale  
1:6,000 @ A3

Date  
JULY 2021

EM04\_PHASE 4\_v2.dwg



**NOTES**


THIS PLAN SHOWS THE GENERAL ORDER OF WORKING, WITH MINING BLOCKS PROGRESSING IN AN ANTICLOCKWISE DIRECTION FROM THE SOUTH EAST.

EACH MINING BLOCK WILL BE NO GREATER THAN 150m X 150m (22,500m³).

**LEGEND**

- EXTRACTION PHASE BOUNDARY
- LEGAL BOUNDARIES
- OVERBURDEN / SOIL STORAGE
- ACCESS ROAD
- ACTIVE MINING AREA
- PREVIOUS MINING AREA
- RECLAMATION AREA

MOUNTAIN ASH LIMITED PARTNERSHIP.  
SUMMIT AGGREGATES RESOURCE  
W 1/2 SEC 31 TWP 026 RGE 03 W5M  
COCHRANE  
ALBERTA



SLR  
global environmental solutions

SLR Consulting (Canada) Ltd.  
200 - 708 11th Ave SW  
Calgary,  
Alberta, T2R 0ER  
www.slrconsulting.com

**COP APPLICATION**

212.06650.00006

**OVERALL WORKING PROGRESSION**

**04**

Scale

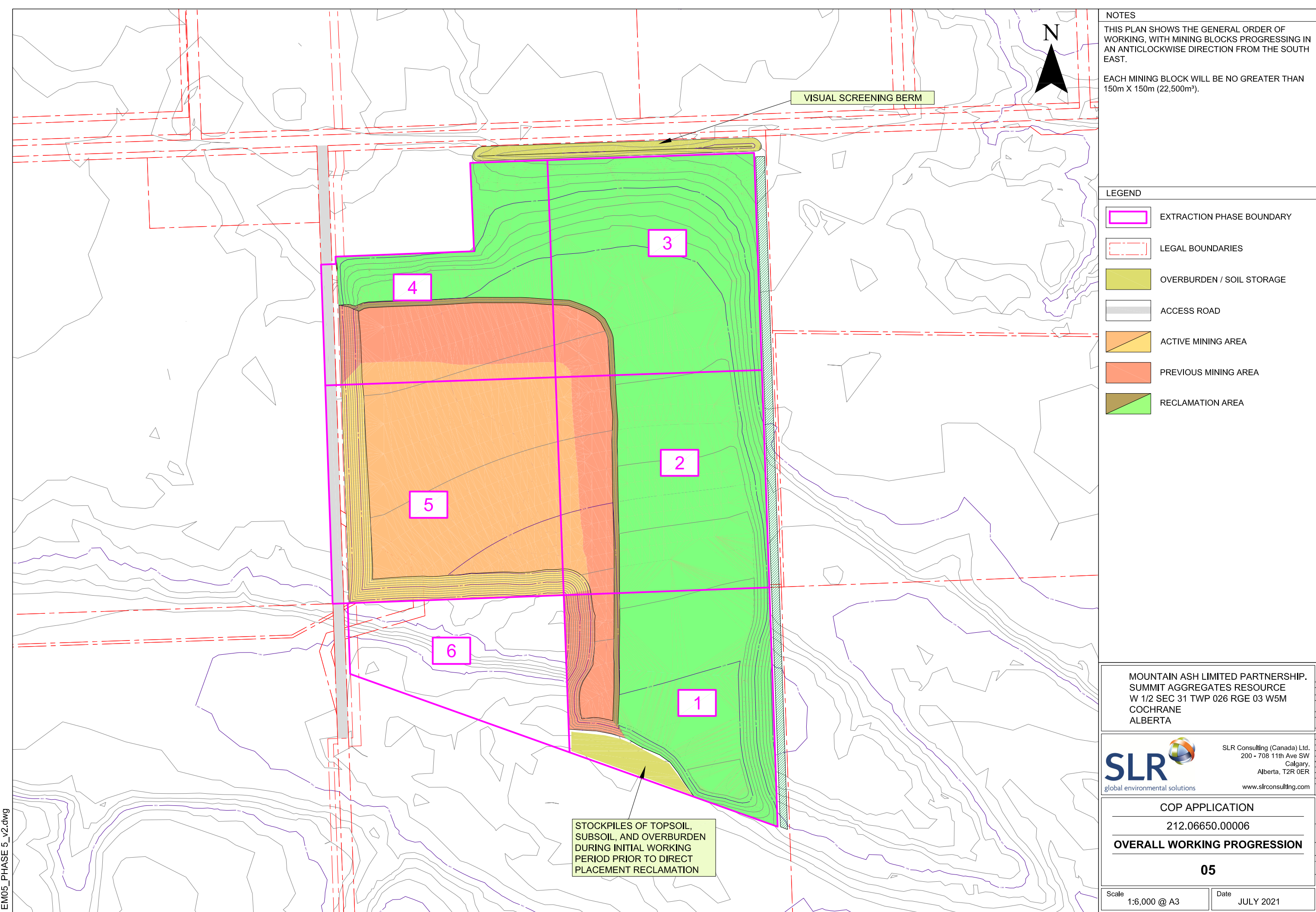
1:6,000 @ A3

Date

JULY 2021



EM05\_PHASE 5\_v2.dwg



**NOTES**

THIS PLAN SHOWS THE GENERAL ORDER OF WORKING, WITH MINING BLOCKS PROGRESSING IN AN ANTICLOCKWISE DIRECTION FROM THE SOUTH EAST.

EACH MINING BLOCK WILL BE NO GREATER THAN 150m X 150m (22,500m³).

- LEGEND**
- EXTRACTION PHASE BOUNDARY
  - LEGAL BOUNDARIES
  - OVERBURDEN / SOIL STORAGE
  - ACCESS ROAD
  - ACTIVE MINING AREA
  - PREVIOUS MINING AREA
  - RECLAMATION AREA

MOUNTAIN ASH LIMITED PARTNERSHIP.  
SUMMIT AGGREGATES RESOURCE  
W 1/2 SEC 31 TWP 026 RGE 03 W5M  
COCHRANE  
ALBERTA



SLR  
global environmental solutions

SLR Consulting (Canada) Ltd.  
200 - 708 11th Ave SW  
Calgary,  
Alberta, T2R 0ER  
www.slrconsulting.com

**COP APPLICATION**

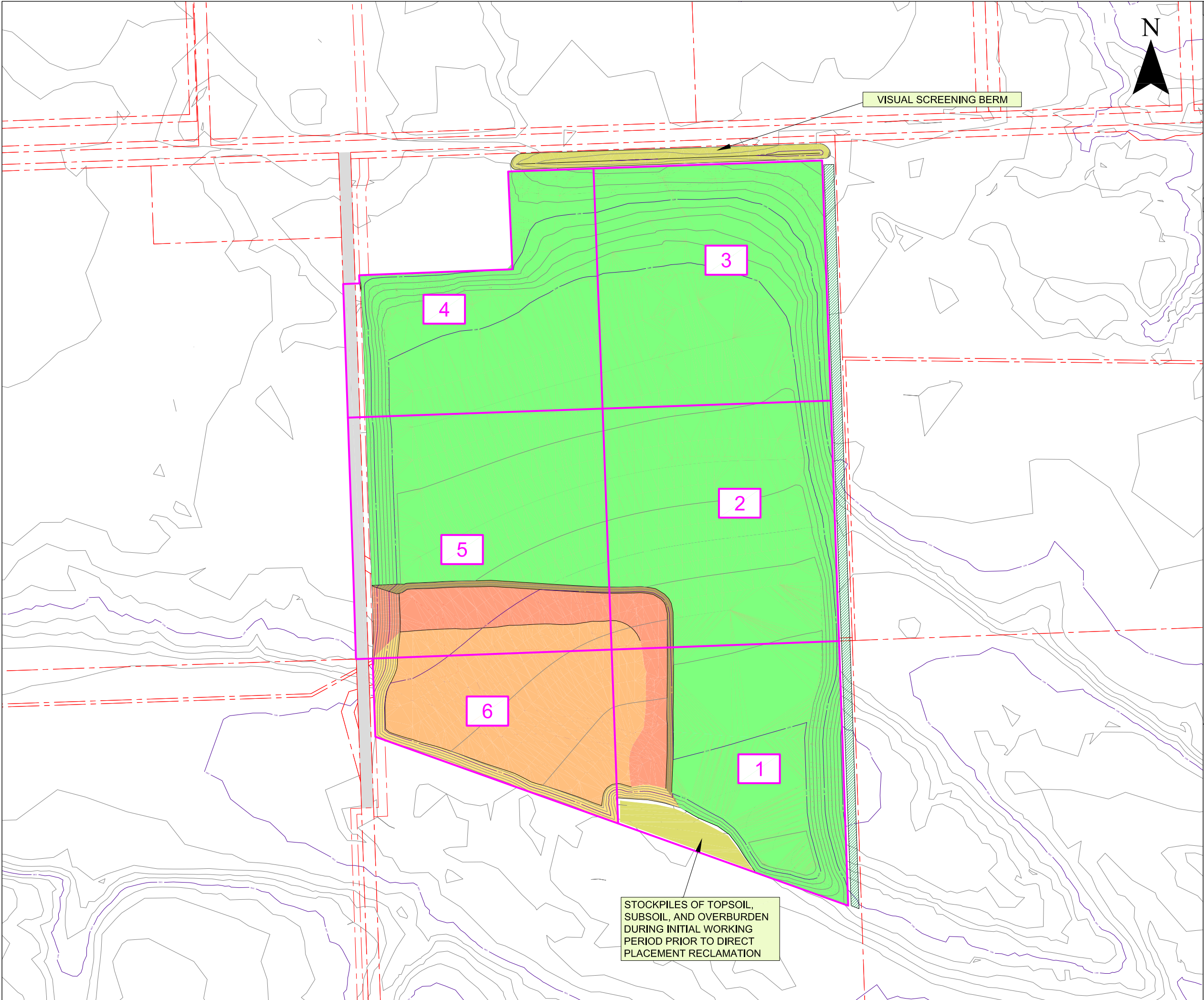
212.06650.00006

**OVERALL WORKING PROGRESSION**

**05**

Scale 1:6,000 @ A3 Date JULY 2021

EM06\_PHASE 6\_v2.dwg



**NOTES**

THIS PLAN SHOWS THE GENERAL ORDER OF WORKING, WITH MINING BLOCKS PROGRESSING IN AN ANTICLOCKWISE DIRECTION FROM THE SOUTH EAST.

EACH MINING BLOCK WILL BE NO GREATER THAN 150m X 150m (22,500m³).

**LEGEND**

- EXTRACTION PHASE BOUNDARY
- LEGAL BOUNDARIES
- OVERBURDEN / SOIL STORAGE
- ACCESS ROAD
- ACTIVE MINING AREA
- PREVIOUS MINING AREA
- RECLAMATION AREA

MOUNTAIN ASH LIMITED PARTNERSHIP.  
SUMMIT AGGREGATES RESOURCE  
W 1/2 SEC 31 TWP 026 RGE 03 W5M  
COCHRANE  
ALBERTA

SLR  
global environmental solutions

SLR Consulting (Canada) Ltd.  
200 - 708 11th Ave SW  
Calgary,  
Alberta, T2R 0ER  
www.slrconsulting.com

**COP APPLICATION**

212.06650.00006

**OVERALL WORKING PROGRESSION**

**06**

Scale  
1:6,000 @ A3

Date  
JULY 2021